

MOVE IN round

recessed

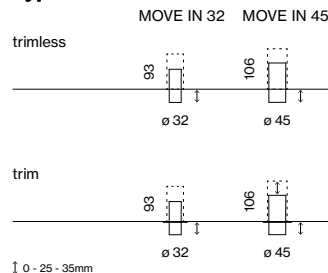
EN Round spotlight element in aluminium, available in 2 sizes; powder coated; installation without tools in mounting set (trimless or with trim) with ball catch system; special mounting tool for easy installation of the trimless housing available as an accessory; spotlight element height adjustable without tools: flush with the ceiling, or extended 25 mm or 35 mm; COB (Chip on Board) technology for maximum efficiency; no multiple shadows; energy-efficient LEDs with very good colour rendering; high-quality, aluminium, vapour deposition coated reflector with faceted design; precise radiation characteristic; good glare reduction due to recessed light point plane; optical attachments as accessories

ES Proyector de aluminio redondo en 2 tamaños; recubierto de polvo; instalación sin herramientas mediante kit de montaje (con o sin marco) con sistema inserción de bola; herramienta de montaje especial para la sencilla instalación de la carcasa sin bordes disponible como accesorio; proyector altura ajustable sin herramienta: enrasado al techo, sobresaliente 25 mm o 35 mm; Chip on Board que proporciona una máxima eficiencia; sin formación de sombras; LEDS de alta eficiencia que proporcionan una alta reproducción cromática; reflector de alta calidad vaporizado de aluminio con revestimiento de facetas esféricas; característica proyección precisa; buen control del deslumbramiento mediante plano de punto de luz retranqueado; los accesorios ópticos como accesorios

Quickinfo

2700 K, 3000 K
 CRI ≥ 90, 2 SDCM
 MOVE IN 32 up to 86lm/W
 MOVE IN 45 up to 95lm/W
 L80 @ 50 000 h
 non DIM, DALI-2

Types



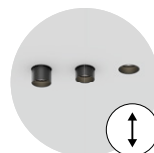
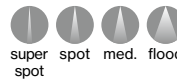
Inset colours



Housing colours



Light distributions



tool-free height adjustment



trimless installation in plasterboard

Order options

| | |
|---------------------------|----|
| COLOUR TEMPERATURE | ☐☐ |
| 2700K | 4 |
| 3000K | 5 |

| | |
|--------------------------|---|
| INSET COLOUR | ☑ |
| ○ traffic white RAL 9016 | 7 |
| ● jet black RAL 9005 | 8 |
| ● brushed aluminium | 6 |
| ● chrome | 4 |

| | |
|--------------------------|---|
| HOUSING COLOUR | ☑ |
| ○ traffic white RAL 9016 | 7 |
| ● jet black RAL 9005 | 8 |

| | |
|----------------------|---|
| BEAM ANGLE | ▲ |
| MOVE IN 32/45 | |
| super spot 8°* | V |
| spot 18°/14° | S |
| medium 23°/24° | M |
| flood 37°/39° | F |

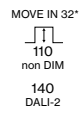
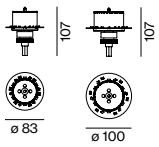
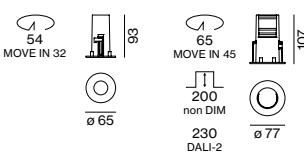
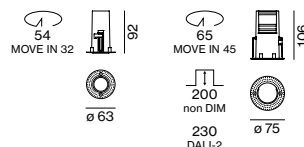
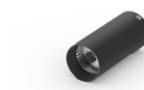
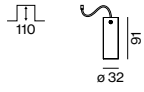
*only for MOVE IN 45

Options on request

| | |
|---------------------|-------|
| INSET COLOUR | |
| ● gun metal | _____ |
| ● brushed brass | _____ |

| | |
|-----------------------|-------|
| HOUSING COLOUR | |
| special colours | _____ |

| | |
|---------------------|-------|
| POWER SUPPLY | |
| DIM 1-10V | _____ |



MOVE IN 32 round



SPOTLIGHT incl. connection cable 600 mm

| | | |
|--------------------|----------------------|-------------------|
| INSET POWER | LUMINOUS FLUX | ORDER CODE |
| 8.8 W 36 Vf 250 mA | 755 lm | 063-81111 ☐☑▲ |

MOVE IN 45 round



SPOTLIGHT incl. connection cable 600 mm

| | | |
|---------------------|----------------------|-------------------|
| INSET POWER | LUMINOUS FLUX | ORDER CODE |
| 12.8 W 37 Vf 350 mA | spot 1010 lm | 063-81211 ☐☑S |
| 13.5 W 36 Vf 400 mA | 1280 lm | 063-81211 ☐☑▲ |
| 6.9 W 11 Vf 600 mA | super spot 356 lm | 063-81211 ☐☑V |

Mounting accessories

MOUNTING HOUSING TRIMLESS
for installation in plasterboard ceilings 9-25 mm

| | | |
|-------------|-----------------|-------------------|
| TYPE | Ø-H (mm) | ORDER CODE |
| MOVE IN 32 | 63-93 | 063-8811117 |
| MOVE IN 45 | 75-106 | 063-8812117 |

MOUNTING HOUSING WITH TRIM
for installation in ceilings from 2-25 mm

| | | |
|-------------|-----------------|-------------------|
| TYPE | Ø-H (mm) | ORDER CODE |
| MOVE IN 32 | 65-93 | 063-8821111 ☐ |
| MOVE IN 45 | 77-107 | 063-8822111 ☐ |

SPECIAL MOUNTING TOOL

| | | |
|-------------|-----------------|-------------------|
| TYPE | Ø-H (mm) | ORDER CODE |
| MOVE IN 32 | 83-9 | 063-8911110 |
| MOVE IN 45 | 100-9 | 063-8912110 |

necessary to install mounting housing trimless

Electrical accessories

POWER SUPPLY 220-240 V AC, 50-60 Hz, ☐ PC II

| | | | |
|------------------|-------------------|-------------------|-------------------|
| TYPE | EFFICIENCY | L-W-H (mm) | ORDER CODE |
| 250 mA non DIM | η 80% | 65-39-20 | 002-90742 |
| 250 mA DALI-2 | η 82% | 147-33-23 | 002-90743 |
| 350 mA non DIM | η 85% | 180-30-21 | 002-90722 |
| 350 mA DALI-2 | η 85% | 197-29-21 | 002-90720 |
| 400 mA non DIM | η 88% | 180-30-21 | 002-90724 |
| 400 mA DALI-2 | η 86% | 197-29-21 | 002-90728 |
| 600 mA non DIM | η 87% | 180-30-21 | 002-90726 |
| 600 mA DALI-2 | η 88% | 197-29-21 | 002-90729 |

MOVE IN 32 trimless revision opening required; *insert before mounting set with trim

DIN RAIL COMPONENTS

| | | |
|---|-------------------|-------------------|
| TYPE | W-H-D (mm) | ORDER CODE |
| POWER SUPPLY 220-240 V AC | 72-90-63 | 005-6520210 |
| 160 W 48 V DC constant voltage | | |
| LED DRIVER DALI-2 DT6 1-2 addr. | 36-88-59 | 005-6121030 |
| 200-1050 mA settable const. current | | |
| 2 × 42 W 48 V DC U _{OUT} 10-40 V | | |

for more details and components see page Seite 981

Optical accessories

HONEYCOMB LOUVER

| | | |
|-------------|-----------------|-------------------|
| TYPE | Ø-H (mm) | ORDER CODE |
| MOVE IN 32 | 30-3 | 007-1965168 |
| MOVE IN 45 | 42-3 | 007-1965188 |

INSET POWER is the current consumption excluding any ballast
LUMINOUS FLUX value calculated for 3000K, CRI ≥90, colour white, reflector flood 2700K -6%